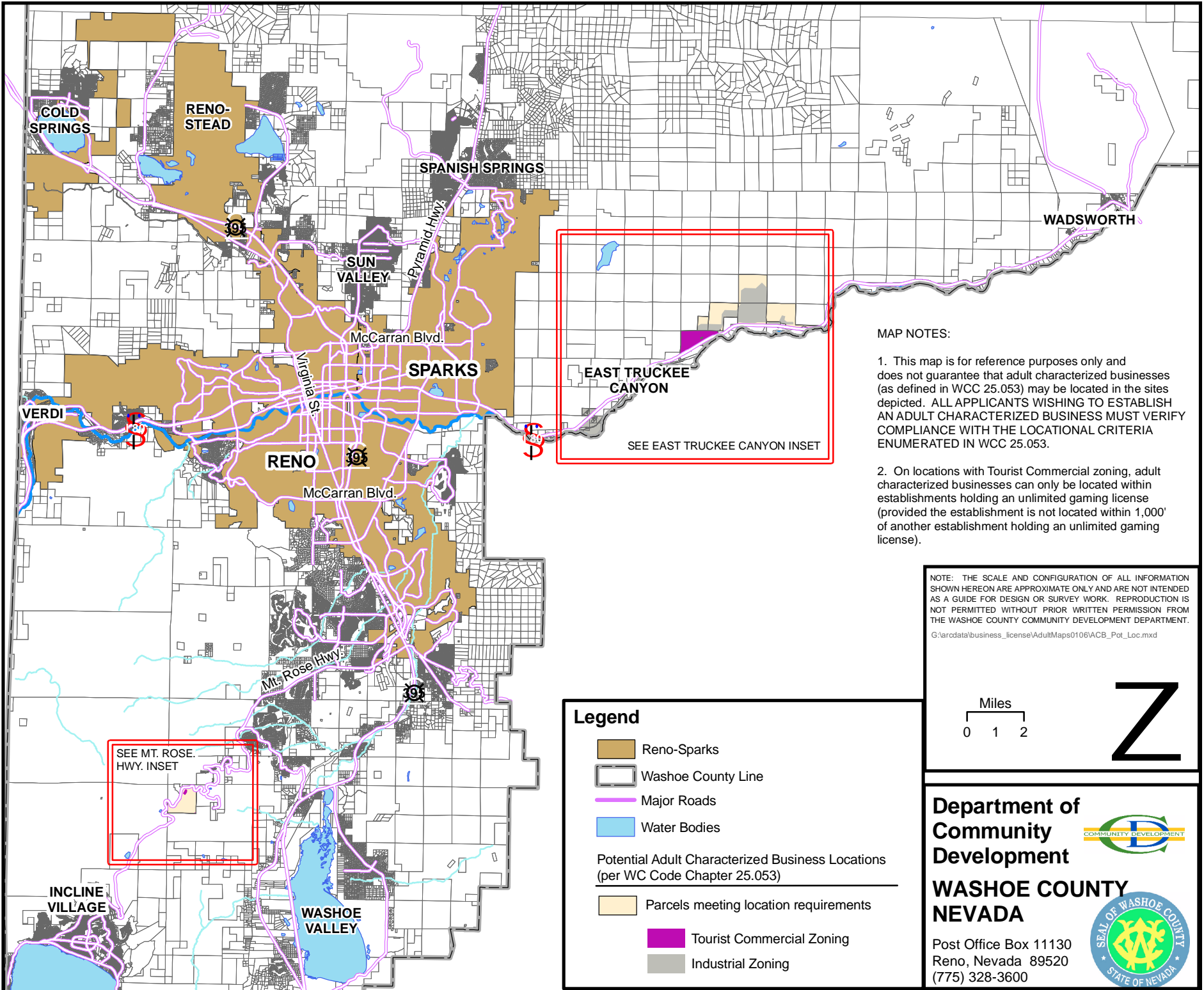
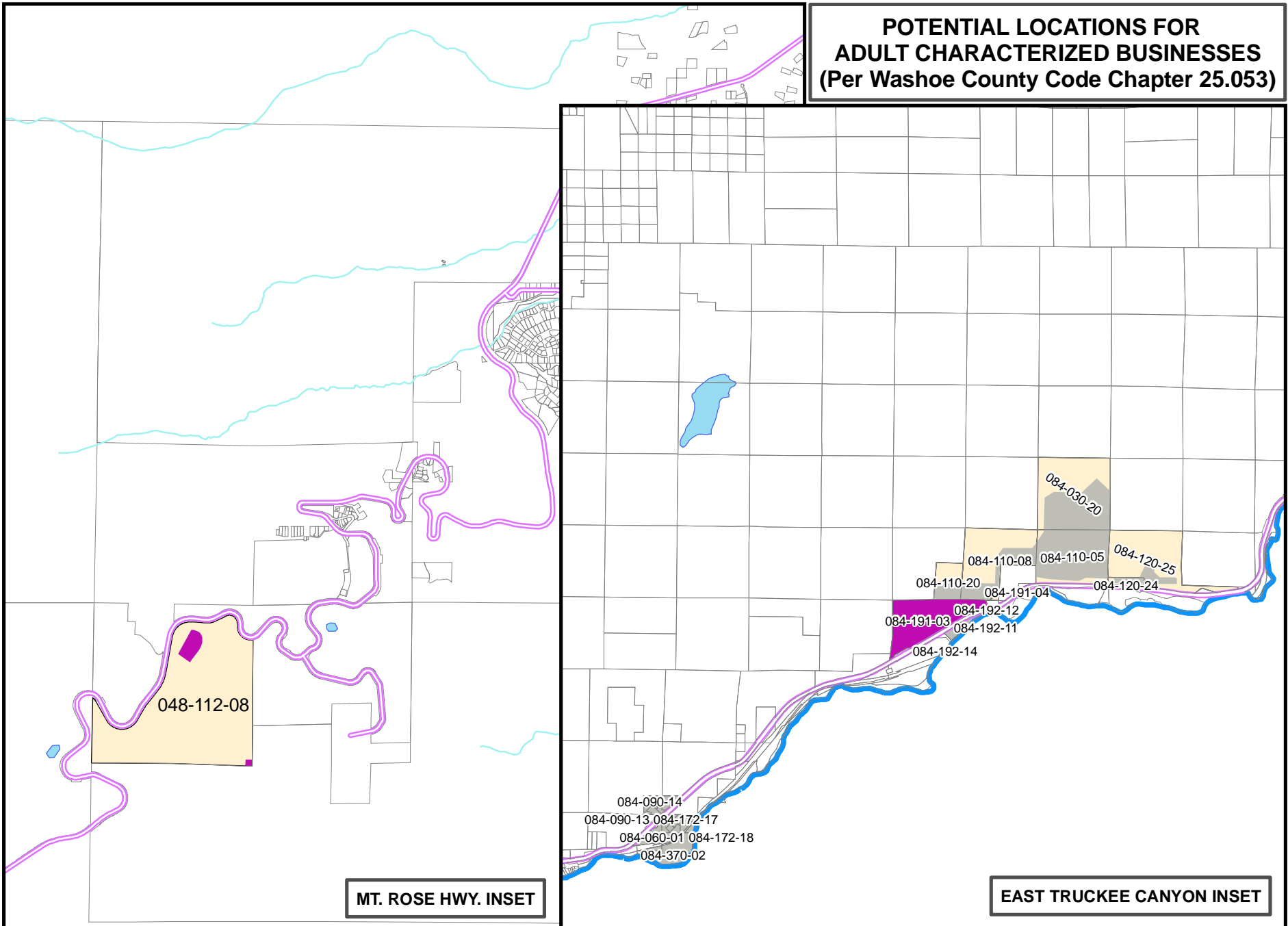
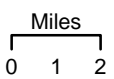


**POTENTIAL LOCATIONS FOR
ADULT CHARACTERIZED BUSINESSES
(Per Washoe County Code Chapter 25.053)**



- MAP NOTES:**
1. This map is for reference purposes only and does not guarantee that adult characterized businesses (as defined in WCC 25.053) may be located in the sites depicted. ALL APPLICANTS WISHING TO ESTABLISH AN ADULT CHARACTERIZED BUSINESS MUST VERIFY COMPLIANCE WITH THE LOCATIONAL CRITERIA ENUMERATED IN WCC 25.053.
 2. On locations with Tourist Commercial zoning, adult characterized businesses can only be located within establishments holding an unlimited gaming license (provided the establishment is not located within 1,000' of another establishment holding an unlimited gaming license).

NOTE: THE SCALE AND CONFIGURATION OF ALL INFORMATION SHOWN HEREON ARE APPROXIMATE ONLY AND ARE NOT INTENDED AS A GUIDE FOR DESIGN OR SURVEY WORK. REPRODUCTION IS NOT PERMITTED WITHOUT PRIOR WRITTEN PERMISSION FROM THE WASHOE COUNTY COMMUNITY DEVELOPMENT DEPARTMENT.
G:\arcdata\business_license\AdultMaps\0106\ACB_Pot_Loc.mxd



Legend

- Reno-Sparks
- Washoe County Line
- Major Roads
- Water Bodies

Potential Adult Characterized Business Locations (per WC Code Chapter 25.053)

- Parcels meeting location requirements
- Tourist Commercial Zoning
- Industrial Zoning

**Department of
Community
Development**

**WASHOE COUNTY
NEVADA**

Post Office Box 11130
Reno, Nevada 89520
(775) 328-3600

